

# Beppu Trip

Travel through Beppu like a local.  
The city where our paths cross.



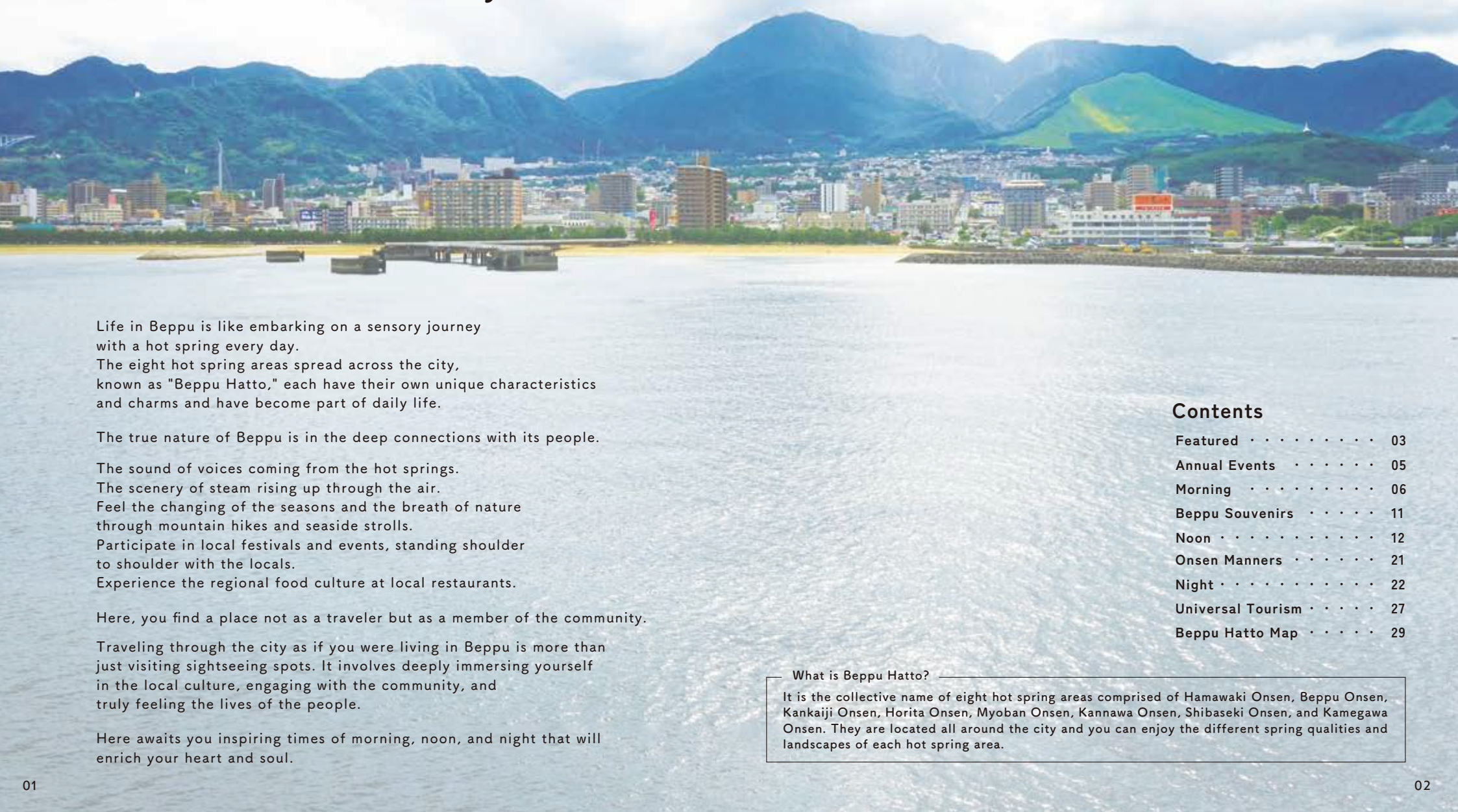
Beppu trip website  
<https://beppu-tourism.com/>

English

TAKE FREE



# People, Nature, and Hot Springs in Harmony The Tale of a Steamy Town



Life in Beppu is like embarking on a sensory journey with a hot spring every day. The eight hot spring areas spread across the city, known as "Beppu Hatto," each have their own unique characteristics and charms and have become part of daily life.

The true nature of Beppu is in the deep connections with its people.

The sound of voices coming from the hot springs.

The scenery of steam rising up through the air.

Feel the changing of the seasons and the breath of nature through mountain hikes and seaside strolls.

Participate in local festivals and events, standing shoulder to shoulder with the locals.

Experience the regional food culture at local restaurants.

Here, you find a place not as a traveler but as a member of the community.

Traveling through the city as if you were living in Beppu is more than just visiting sightseeing spots. It involves deeply immersing yourself in the local culture, engaging with the community, and truly feeling the lives of the people.

Here awaits you inspiring times of morning, noon, and night that will enrich your heart and soul.

## Contents

Featured . . . . .	03
Annual Events . . . . .	05
Morning . . . . .	06
Beppu Souvenirs . . . . .	11
Noon . . . . .	12
Onsen Manners . . . . .	21
Night . . . . .	22
Universal Tourism . . . . .	27
Beppu Hatto Map . . . . .	29

### What is Beppu Hatto?

It is the collective name of eight hot spring areas comprised of Hamawaki Onsen, Beppu Onsen, Kankaiji Onsen, Horita Onsen, Myoban Onsen, Kannawa Onsen, Shibaseki Onsen, and Kamegawa Onsen. They are located all around the city and you can enjoy the different spring qualities and landscapes of each hot spring area.





Mt. Tsurumidake



Myoban Onsen



Tanada

## Mountains, Villages, Hot Springs Feel Nature's Blessings Throughout the Body

### Mt. Tsurumi

#### The Symbol Beloved by Mountaineers

Mt. Tsurumi is one of the sources of Beppu's hot springs, which boast one of the largest output of hot spring water in the world. At an elevation of 1,375 meters, the panoramic view during all four seasons is spectacular, making it a popular destination for hikers. It takes only 10 minutes to reach the Tsurumi Sanjo Station just below the summit using the "Beppu Ropeway," making it easy to experience the magnificent view.



### Myoban Onsen Area

#### The Many Charms of Myoban

Yunohana Goya (Sinter producing huts), designated as an important intangible folk cultural property by the country for its manufacturing technique, can be visited for free. In the large open-air bath on the hill, you can enjoy milky white-hot spring water, which has a skin-smoothing effect, as well as the spectacular view of the Myoban Bridge and Mt. Takasaki. Natural bath salts called "Medicinal Yunohana" are produced and sold directly at a shop alongside the huts.



### Terraced Rice-Fields

#### Beautiful Countryside Landscape

Terraced rice fields called "Tanada" are built in a staircase pattern on sloping land. There are five Tanada in the city (Amama, Doumen, Uchinari, Otokoro, and Higashiyama). In the mountainous Uchinari area, around 1,000 rice fields are flooded with water in early summer, turning them green throughout the summer and then golden all around in autumn. Tanada, where nature and people's lives intersect, are the original Japanese landscape.





# Annual Events

Feb.



**Beppu-Oita  
Mainichi Marathon**

Apr.



**Beppu Hatto  
Onsen Festival**

Apr.



**Beppu Mt.Tsurumi  
Ikki Hike Tournament**

Apr.  
June



**Beppu Argerich  
Music Festival**

June



**Kagurame Lake  
Iris Garden Opening**

July



**Beppu Hinoumi  
Festival**

Sep.  
Nov.



**Beppu Art Month**

Oct.



**Agriculture, Forestry  
and Fisheries Festival  
"Oita Minori Festa"**

Dec.



**Beppu  
Christmas Fantasia**

All events may change in title, date, time, and content.  
Please check the website for details before visiting.

For more information,  
check here!



# Morning

Hot spring steam rises in the silence,  
The morning sun rises, casting soft light upon the city.  
A peaceful, soothing morning away from the hustle and bustle of everyday life.



The scenery of Kannawa





# Morning Scenery

## The Town of Kannawa Onsen

The morning in the town of Kannawa Onsen is a beautiful and peaceful sight to witness. The steam has an orange glow as the sun's rays cross the horizon, creating a dreamlike scenery that highlights the charm of the area.



## The scenery of Onsen Town

Manholes and signs on the ground, unique to this hot spring town, signify that it's a special place with a long history and culture. The gently swaying steam rising through the streets appears as if it's the lifeblood of this town.



## Jigokumushi cuisine

Jigokumushi cuisine is one of the town's charms. You can enjoy the unique flavor of eggs and vegetables cooked in the hot spring steam. Have a light breakfast outside while watching the steam rise from the hot springs.



## The steam of the Ryokan

The powerful steam rising from the chimneys of the Ryokan symbolizes the abundant hot spring resources in the area.



## Ippen Yukake Shonin

Kannawa Onsen is a therapeutic hot spring town founded by Ippen Shonin during the Kamakura period. People pray for healing by pouring hot spring water on the same parts of their bodies as the matching parts of the Ippen statue.

## Kannawa Mushiyu (Steam Onsen)



## Detox With Steam and Aromas

Enter a stone hut warmed by hot spring steam and lie down on Sekishou (medicinal herbs) spread out on the floor. Your body will be awakened by the refreshing aroma of the steam.

Area Kannawa

1 Kannawakami, Beppu

0977-67-3880

6:30~20:00

(last entry at 19:30) Closed : Every 4th Thursday  
(or the following day if it's a national holiday)



## Shibuno Yu



## Quality Springs Loved by Locals

This "Jimo-sen" (Public hot spring) is frequented by locals from the early morning. It symbolizes the Kannawa area. Instead of an entrance fee, a paid coin locker is used for bathing.

Area Kannawa

1 Kannawafuromoto, Beppu

6:30~20:30

Closed : None



## Shoningahama Park

## Charged by the Morning Sunrise



This grassy square is planted with Washingtonia palms and other foliage, and many people enjoy strolling along the promenade. This area is also famous as a sunrise spot, attracting visitors who come to watch the sunrise over Beppu Bay in the early morning. The Beppu International Tourism Port is also nearby, so you can enjoy the sight of ferries coming and going.

Area Kamegawa

504-1 Shoningahama, Beppu

0977-21-1473 (Beppu City Hall  
Parks and Greenery Division)



# Beppu Park

## Soothed by Seasonal Views


This symbolic park is located in the center of Beppu City and has become a place of relaxation for citizens. It is also known as a popular spot for cherry and plum blossoms. You can see people enjoying the natural beauty of the seasons while walking, jogging, or sitting on the benches having breakfast. The Moso bamboo grove on the south side of the park, with the sound of rustling leaves and swaying bamboo in the breeze, provides a peaceful atmosphere.

Area

Around Beppu Station

3018-1 Noguchibaru, Oaza Beppu, Beppu

0977-21-1473 (Beppu City Hall Parks and Greenery Division)





# Spa Beach Pleasant Seaside Stroll

With a view overlooking Beppu Bay, Spa Beach is an oasis in the city located close to National Route 10 and JR Beppu Station. There is a long pedestrian walkway between the lush, beautifully maintained Matogahama Park and the beach, where you can enjoy jogging and walking. It is also popular for guests who want to be active in the morning and is close to the Kitahama area, where many Ryokan and hotels are located.



Area

Around Beppu Station

5 Kitamatogahamacho, Beppu



# Tomonaga Pan (Bakery) A Nostalgic Flavor Complements Daily Life

Long lines forming before the bakery opens have become a morning tradition in Beppu. Artisans bake bread by hand multiple times a day. The most popular bread is Anpan, filled with red beans from Hokkaido, and comes in two varieties: "Koshi" and "Tsubu". Opened more than 100 years ago by a first-generation family, the traditional flavors, techniques, and passion have been passed down for generations, becoming an essential part of Beppu's dining table.

Area

Around Beppu Station

2-29 Chiyomachi, Beppu

0977-23-0969

8:30~18:00

Closed : Sunday, National holiday (Including Obon and New Year)





# Beppu Eki Ichiba (Beppu Station Market) A Variety of Renowned and Specialty Stores

The market under the railway tracks at JR Beppu Station is known as the "Locals' Kitchen" and is lined with a variety of shops selling fresh meat, fish, and fruit. Buying prepared foods and having breakfast in the rest area or park is highly recommended.

Area

Around Beppu Station

6-22 Chuomachi, Beppu

0977-22-1686



# Beppu Tabi Morning Feature

Beppu Tabi, Beppu City's official tourist information website, provides recommendations for morning spots in Beppu. Check here for the latest information!

READ MORE!









## Take-zaiku (Bamboo Craft)

Beppu is known for its bamboo production and has a long history of traditional craftsmanship. You can find artistic creations like flower baskets, as well as accessories and household goods such as strainers and hand baskets.

## Zabon

Zabon is known as the king of citrus fruits. Processed goods that utilize the bitterness and scent of the peel, such as "Zabon Zuke" and "Beppu Zabon cider," make easy souvenirs.

# Beppu Souvenirs

Looking for souvenirs is one of the best parts of traveling.

READ MORE



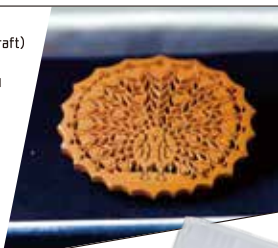
## Yunohana

Yunohana is a natural bath salt made using a traditional method dating back to the Edo period. It has excellent cleansing and bactericidal effects, and cosmetics such as skin lotion blended with yunohana are especially popular.



## Tsuge-zaiku (Japanese Boxwood Craft)

The handicrafts of tsuge-zaiku (Japanese boxwood) are skillfully crafted by artisans using carving techniques. Tsuge brushes and combs are appealing because the more you use them, the more glossy they become.



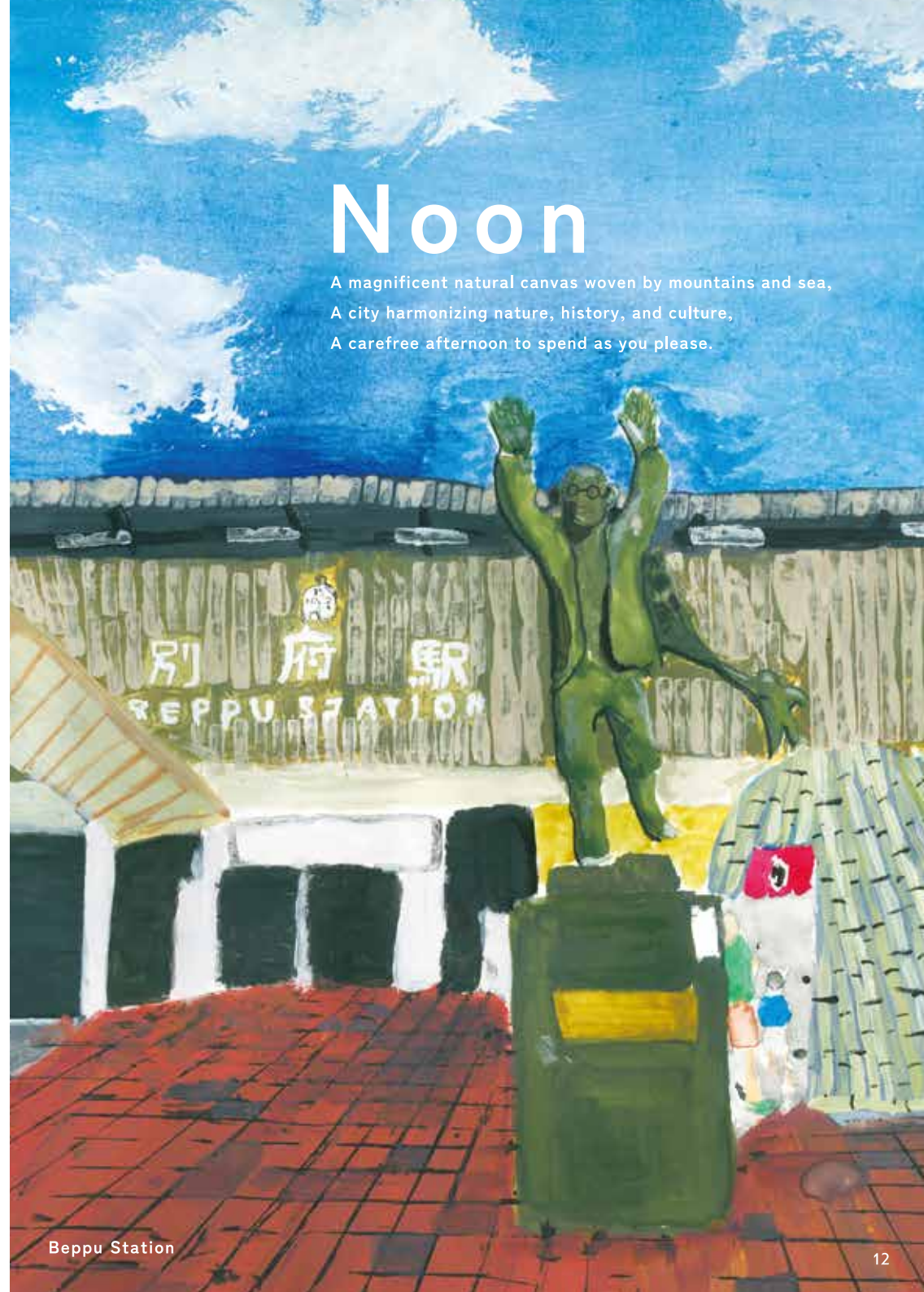
## Retro Towel

Towels are a must for hot springs. Retro towels with designs from the 1930s and 1940s (Showa era) are especially popular. There is a wide variety and they have excellent water absorbency.



# Noon

A magnificent natural canvas woven by mountains and sea,  
A city harmonizing nature, history, and culture,  
A carefree afternoon to spend as you please.



Beppu Station



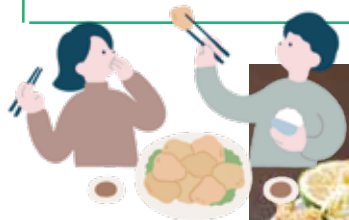
## Beppu Reimen (Cold Noodle) | Refreshing Noodles After a Bath

Beppu Reimen has its roots in the former Manchuria area, and each restaurant and ramen shop has its own unique preparations. The most common styles include chewy noodles blended with buckwheat flour, Japanese-style soup, beef chashu, and cabbage kimchi.



◀ READ MORE

## Local Cuisine Born in Beppu | Beppu Toriten (Beppu Chicken Tempura)



◀ READ MORE



Local Oita cuisine that originated in Beppu, and is also a well-loved homestyle dish. Seasoned chicken is dipped into a batter and deep-fried, then served with mustard, soy sauce and vinegar, or ponzu. It is lighter in color than karaage and is crispy and juicy. It is available in a variety of restaurants, including coffee shops, Japanese restaurants, and Chinese restaurants, where the originality of each restaurant stands out.

## Beppu Pudding | An Excellent Steamed Sweet

Beppu Pudding, made by onsen facilities and pastry shops, is unique in that it is steamed using steam from hot springs. Particularly in the Kannawa and Myoban areas, each facility has its own unique way of preparing Beppu Pudding, attracting many with its smooth, melt-in-your-mouth texture.



## Beppu City Traditional Bamboo Crafts Center

### Beppu bamboo craft

#### Discover the World of Bamboo Crafts

You can discover the beauty of "Beppu bamboo craft," a nationally designated traditional craft. Make your own "Bamboo bells" using colorful bamboo strips or weave bamboo strips into a round shape to create "Shikainami flower baskets." Both require reservations at least one week in advance.

Area Kannawa

8-2-13, Higashisoen, Beppu

0977-23-1072

8:30~17:00 Closed : Monday  
(or the following day if it's a national holiday)



## Jigokumushi Kobo Kannawa (Hell Steaming Workshop Kannawa)

### Jigokumushi Cuisine

#### Enjoy the Taste of Hot Springs

"Jigokumushi cuisine" is a steamed dish that utilizes the steam of a hot spring and has been around since the Edo period (1603-1868). You can select your favorite ingredients and steam them yourself in a Jigoku steaming pot. Foods are steamed all at once using hot spring steam consisting of minerals, such as salt, which seals in the original flavor of the ingredients.

Area Kannawa

5 Furomoto, Beppu 0977-66-3775

10:00~19:00 (Last entry at 18:00)

Closed : Every 3rd Wednesday  
(or the following day if it's a national holiday)



## Oita Fragrance Museum Scenting experience

#### Treat Yourself to a One-of-a-Kind Fragrance

This museum is themed around fragrance, and popular activities include the "Scenting experience," where you can create your very own one-of-a-kind, original perfume, and the "Scent bag experience," where you can blend the fragrances of your favorite incense ingredients. There are approximately 3,600 items in the museum's collection, all related to fragrance.

Area Kannawa

48-1 Kitaishigaki, Beppu 0977-27-7272

10:00~18:00 (Reservation is required  
for the experiences)  
Closed : Every 3rd Thursday, 12/31 ~ 1/3





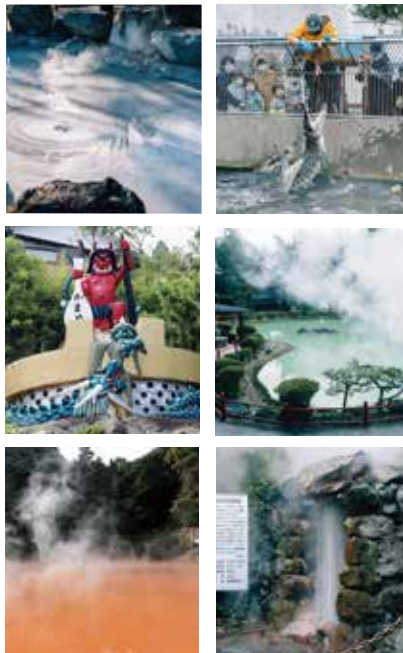


## Beppu Jigoku Meguri

### Enjoy the Energy of Hot Springs With Your 5 Senses

"Beppu Jigoku Meguri" is a tour of popular sightseeing spots that have a history dating back to ancient times. People once feared approaching these areas because of the steam, hot mud, and boiling water that gushed out at temperatures around 100°C. You can tour these seven unique "Hells," including Umi Jigoku, which is cobalt-blue and beautiful, Chinoike Jigoku, known for its bright blood-red color, and Oniyama Jigoku, where crocodiles are bred using hot spring heat.

**Area** Kannawa • Kamegawa **📍** 559-1 Kannawa, Beppu  
**☎** 0977-66-1577 (The Beppu Jigoku Association)  
**🕒** 8:00~17:00



## Beppu Kannawa Jigoku Onsen Museum

### Learn the Stories of Hot Springs and Hells



You can learn about the underground journey of rainwater as it is transformed into hot spring water at this interactive museum.

**Area** Kannawa **📍** 321-1 Kannawa, Beppu  
**☎** 0977-84-7858  
**🕒** 9:00~18:00 (Last entry at 17:30)  
 Closed : Irregular (Around 4 days in a year)



## Shidaka Lake

### A Lake on the Plateau: Enjoy the Great Outdoors



This lake is beautiful in all seasons. The campground around the lake attracts many campers from inside and outside the prefecture, and there is also an outdoor athletic facility nearby.

**Area** Mountainous region  
**📍** 4380 Aza Shidaka, Oaza Beppu, Beppu  
**☎** 0977-25-3601 (Shidaka Lake Management Office)  
**🕒** 8:00~19:00 (Management building)



## Kijima Kogen Park

### (Amusement park)

### Gateway to Extraordinary Adventures



This diverse facility includes the "Jupiter" wooden rollercoaster and more than 40 attractions, as well as hot springs, a hotel, and a golf course.

**Area** Mountainous Region **📍** 123 Kijimakogen, Beppu  
**☎** 0977-22-1165 **🕒** 10:00~17:00 (May vary depending on the season)  
 Closed : Please check the website



## Beppu Onsen Suginoi Hotel

### Hot Spring Resort on a Hill in Beppu



The panoramic open-air bath "Tanayu" was renovated in 2023. It is available for day use along with the "Aqua Garden" located in the same building. You can also enjoy a fountain show at night.

**Area** Kankaiji **📍** 1 Kankaiji, Beppu **☎** 0977-24-1141  
**🕒** 9:00~23:00 (May vary depending on the season),  
 Aqua Garden 11:00~ Closed : Please check the website



## Beppu Ropeway



### Attractive Beauty in All Seasons

Overlooking Beppu Bay and the cityscape, it takes 10 minutes to reach the Tsurumi Sanjo Station just below the 1,375-meter-high summit of Mt. Tsurumi. You can experience the changing seasons, featuring cherry blossoms, autumn leaves, and rime ice.

**Area** Mountainous region  
**📍** 10-7 Aza Kanbara, Oaza Minamitateishi, Beppu  
**☎** 0977-22-2278  
**🕒** 9:00~17:00 (Last ascent at 17:00, Last descent at 17:30) Winter season (11/15-3/14) 9:00~16:30 (Last ascent at 16:30, Last descent at 17:00)



## Kyushu Natural Animal Park

### African Safari

### Experience-Based Safari Park



One of the largest safari parks in Japan, surrounded by breathtaking nature. You can see powerful animals such as lions and tigers in a setting close to their natural habitat.

**Area** Around Beppu City  
**📍** 2-1755-1 Minamihata, Ajimumachi, Usa **☎** 0978-48-2331  
**🕒** 9:30~16:30, Winter season 10:00~15:30 (Safari zone entry permitted until 30 minutes before close)  
 Closed : Please check the website



## Mt. Takasaki National Zoological Garden

### A Memorable Time With Wild Animals



Around 1,000 wild Japanese monkeys can be observed up close. During feeding time, which happens every 30 minutes, many monkeys gather, creating a spectacular scene.

**Area** Around Beppu City  
**📍** 3098-1 Kanzaki, Oita **☎** 097-532-5010  
**🕒** 9:00~17:00 (Last entry at 16:30)



## Beppu Rakutenchi



### The Oldest Amusement Park in Kyushu

This retro amusement park has a nostalgic Showa-era atmosphere. There are unique attractions such as a cable car that opened in 1929, a "Duck race," and a double Ferris wheel.

**Area** Around Beppu Station  
**📍** 18 Nagarekawa-dori, Beppu  
**☎** 0977-85-8888  
**🕒** 9:00~17:00 (May vary depending on the season. Please contact in advance)



## Sanrio Character Park Harmonyland

### A Land of Dreams and Magic, Filled With Smiles



An outdoor theme park where you can meet Sanrio characters. It features spectacular parades and shows.

**Area** Around Beppu City  
**📍** 5933 Oaza Fujiwara, Hijimachi, Hayami **☎** 0977-73-1111  
**🕒** 10:00~17:00 (May vary depending on the season)  
 Closed: Please check the website



## Oita Marine Palace Aquarium

### Umitamago

### Feel the Life of the Sea



A dynamic aquarium unified with the open sea. You can enjoy shows that include unique performances by the animals.

**Area** Around Beppu City  
**📍** Shitakaigan, Takasakyama, Oita **☎** 097-534-1010  
**🕒** 9:00~17:00 Closed : Please check the website





## Sekinoe Beach

### Paradise of Blue Seas and Sand



In 2023, Beppu's only swimming beach was renovated with the addition of an artificial sandy shore and a promenade. Locals enjoy it during the open season, and events are also held there.



**Area** Kamegawa **📍** Furuichimachi, Beppu  
☎ 0977-21-1128 (Beppu City Hall Tourism Division)

## Beppu Hatto Walk

### Deeply Explore the Hot Spring City



Discover the charm of Beppu's eight hot spring areas on a walking tour led by volunteer guides. The tour offers a peek into Beppu's daily life, including its back alleys.



**Area** All  
☎ 0977-24-2828 (Beppu Tourism Association)

## Beppu Velodrome

### A Bicycle Racetrack Unique to the Hot Spring City



A bicycle racetrack where you can watch exciting bicycle races up close. This is the only facility in the country equipped with a "Keirin Onsen," a hot spring inside a bicycle racing track. Enjoy soaking in the hot springs after the bicycle races.



**Area** Kamegawa  
📍 1-36 Kamegawa Higashimachi, Beppu  
☎ 0977-67-5578



## Beppu Hatto Onsendo

### Become an Onsen Master After 88 Hot Spring Baths



Experience the diverse qualities of hot springs through this stamp rally that takes you to the facilities of the eight hot spring areas known as "Beppu Hatto."



**Area** All  
☎ 0977-24-2828 (Beppu Tourism Association)



## Family Onsen

Relax your  
body and mind

"Family Onsen" (private hot springs) are hot springs that are available for private use. These unique family baths offer a relaxing and healing experience, with different spring qualities and atmospheres depending on the location.



### Great for the whole family.

You can bring your children with you and have a good time in a relaxed atmosphere without having to worry about being seen by other people. Of course, it is also a great place with friends.

1



A Japanese garden where you can enjoy the changing seasons.



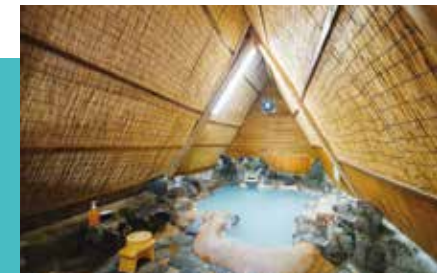
Enjoy the wide-open space in a peaceful environment!

### Why we recommend it

#### Private, secluded space away from others.

Privacy is ensured by separation from others, such as in the changing rooms and bathtubs, and by not sharing the space or coming into contact with others.

2



Thatched roofs create a quaint atmosphere.

3

#### The elegant view is all yours.

Beppu is a hot spring paradise where you can enjoy not only indoor baths, but also outdoor baths for private use! Enjoy the open-air view in luxury.

For information on recommended family baths, check here!



## Tattoo-Friendly

### Everyone Can Enjoy Onsen

Beppu has a wide variety of hot springs, including private hot springs called "Family Onsen" as well as hot springs where you can wear a bathing suit. There are nearly 100 hot springs where people with tattoos can enjoy bathing, and information about them is available on the "ENJOY ONSEN" website.



READ MORE





## Beppu City Central Public Hall



### The Historic Building Where Culture Is Still Alive

A precious modern architectural heritage built in 1928. It has white walls, a stylish Art Deco interior, and stained glass windows with a starry sky design. Everywhere you look, you can see careful attention to detail.

**Area** Around Beppu Station  
 6-37 Kamitanoyumachi, Beppu  
 0977-22-4118  
 (Central Community Center)  
 9:00~22:00



## Global Tower



### A Symbolic Tower With Outstanding Views

The symbolic tower of the "B-Con Plaza," a complex designed by the world-renowned architect Arata Isozaki. From the glass-box-like observation deck at 100 meters above ground, you can enjoy a panoramic view of Beppu city.

**Area** Around Beppu Station  
 12-1 Yamanotecho, Beppu  
 0977-26-7111  
 9:00~21:00, Winter season (Dec-Feb)  
 9:00~19:00



## Myoban Yunohanagoya (Sinter producing huts)



### A 300 Year Old Method Found Nowhere Else in the World

This is the only place in the world where Yunohana is made inside sinter producing huts, a tradition dating back to the Edo period. You can take a tour of the huts for free.

**Area** Myoban  
 Myoban, Beppu  
 0977-24-2828  
 (Beppu Tourism Association)



## Hachiman Asami Shrine



### Seeking the Lucky Stones

Constructed in 1196, this shrine is the guardian God of Beppu hot springs and is the origin of the "Beppu Hatto Onsen Festival." Within the grounds, there is a 1,000-year-old camphor tree and the iconic "Cedar Couple" trees. You might even find the lucky gourd-shaped stone and cup-shaped stone along the cobblestone path that leads to the shrine.

**Area** Hamawaki  
 2-15-19, Asami, Beppu  
 0977-23-1408



# \ So Much To See! / Beppu Art

For more information,  
check here!



Artwork Water Tower Art (Tom Fulin)



Mural  
Onsenbouquet (Michael Lin)



Mural Scene (Yasuhide Kunimoto/at Hotel New Tsuruta)



Mural Green Sun (Taro Okamoto)



Mural  
Mural at Suehiro Onsen (Yukari Ohira)

### TRANSIT (Beppu City Center for Creative Exchange)

This is a hub for information about arts and culture in Beppu City. It also helps artists to relocate and present their activities.



**Area** Around Beppu Station  
 Renga hall (Brick hall) 070-4208-9361  
 1F, 1-3 Suehirocho, Beppu  
 11:00~17:00, Tuesday, Wednesday





# Onsen Manners

There's nothing too complicated. The most important things are to greet others and be respectful. Remember the rules and have a great hot spring experience.

## 1 Greeting



The most important thing is to say hello first. A cheerful greeting can help you get to know each other. Don't forget to say goodbye when you leave the bath.

## 2 Rinse off your body before getting into the bathtub



You might feel tempted to dive into the big bathtub, but first you should rinse yourself off with hot water.

## 3 Do not add water without asking



The temperatures of the hot springs can be very hot, so you may want to add some water at times when it's too hot. But wait a moment and ask the local people, "May I add water?"

## 4 Do not sit on the edge of the bathtub



"Don't sit on the edge of the bathtub" is a rule you should remember as good manners. While this rule might not be commonly heard outside of Beppu, it appears that many people find it uncomfortable.

## 5 Do not put your towel in the hot water



Many people do this without thinking, but it is not good manners to put your towel in the hot spring. Only your body should soak in the hot water.

## 6 Do not soak your hair in the hot water



Before soaking in the hot spring, make sure to tie up long hair.

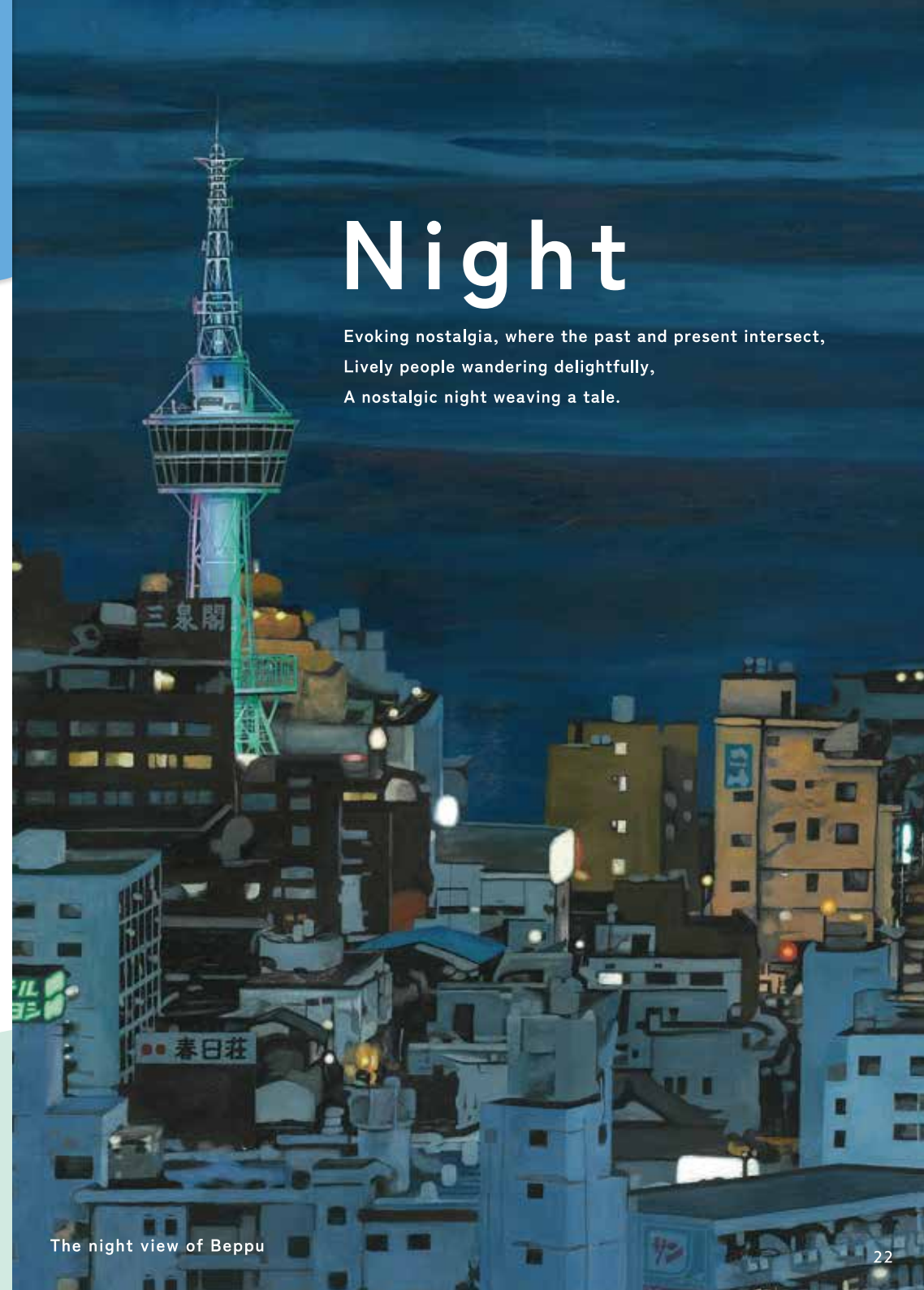


For more information on  
bathing manners and  
how to enjoy hot springs, check here!



# Night

Evoking nostalgia, where the past and present intersect,  
Lively people wandering delightfully,  
A nostalgic night weaving a tale.



The night view of Beppu



## Night Spots at Beppu Station Street

Around the main street that leads from JR Beppu Station to the seaside, you can enjoy gourmet food, entertainment, and hot springs at night.



### Hand Bath (Onsen for hand) Hot Spring Hospitality

A dome-shaped hand bath is located on the east side of JR Beppu Station. The hot spring water that bubbles out from the source is popular among tourists.

Area Around Beppu Station

12-13 Ekimaecho, Beppu

0977-21-1128 (Beppu City Hall Tourism Division)



### Beppu Hit Parade Club One of the Best Nightspots in Kitahama

A live music hall where you can enjoy live performances of oldies music. The audience can also dance and immerse themselves in the atmosphere.

Area Around Beppu Station

2-1-2 Kitahama, Beppu 0977-21-3166

18:00~0:00



### Ekimae Koto Onsen Public Bath With Overnight Stay

This is a hot spring facility with an impressive exterior. You can soak in "Atsu-yu," which is hotter water, or "Nuru-yu," which is warmer water, until late at night. Additionally, staying overnight on the second floor is possible with a reservation.

Area Around Beppu Station 13-14 Ekimaecho, Beppu

0977-21-0541 8:00~23:00

Embark on a food adventure,  
guided by the lights of the alleys.



Beppu Ekimae Street is a must-visit at night. As you enter the narrow paths from the street, you'll find a maze of alleys with a variety of dining options, both old and new, lining up. The area is bustling with tourists and many locals. Explore the deep nightspots for new encounters and discoveries.

## Takegawara, Night Alley Walking

A lively walking tour around the town at night, listening to the street musicians "Hacchan and Bunchan" playing music. This tour is highly recommended for those who want to get to know the deep side of Beppu.

Contact / Reservation

0977-24-2828 (Beppu Tourism Association)

Open: Every 2nd and 4th Friday Closed: Rainy day

START!

Takegawara Onsen



This tour starts at the picturesque historical building "Takegawara Onsen."



Takegawara Koji

The oldest wooden arcade in Japan, called "Takegawara Koji," is introduced with a music performance.

Yasaka Renga Street



There are unique restaurants in these Retro-style alleys for foot traffic only.

Umezono Street



Small but unique restaurants line Umezono Street. At the Umezono Onsen public hot spring, built in 1916, you can enjoy the hot spring water directly from the source.

Solpaseo  
Ginza Arcade



Performance at the bar on the spot.

Mini-live performance by "Hachan and Bunchan", using the neon lights of the town as the "stage."



GOAL!

Takegawara Onsen





## Beppu Tower

### The Symbol of the Hot Spring City Glows in the Night

This 100-meter-high TV tower constructed in 1957, provides a 360-degree panoramic view of the city and stands as a symbol of Beppu. The tower was renovated in 2023, presenting a different appearance during the day and at night. New features include night illuminations that change with the seasons and events. In the same year, it was also registered as a "Night View Heritage of Japan." The colorful gradient of the lights, using LED lighting, adds a vibrant touch to the city.

**Area** Around Beppu Station

📍 3-10-2 Kitahama, Beppu

☎ 0977-26-1555

🕒 9:30~21:30 (Last entry at 21:00)



## Jumonjibaru Observatory

### A Premier Night View Spot in Oita Prefecture

**Area** Myoban

📍 1200 Aza Ikenotsuru, Oaza Noda, Beppu

☎ 0977-21-1128  
(Beppu City Hall Tourism Division)



This observatory overlooking Beppu Bay is located on a plateau about 3 km above the Myoban Onsen area. It offers panoramic views of Oita City, the Kunisaki Peninsula, and even extends as far as Shikoku Island, making it a popular spot for many people. The city lights and the trails of car headlights below create a beautiful scene at night, and the area is recognized as a "Night View Heritage of Japan" and one of the "100 Best Night Views of Japan."

## Sakura Yu (Sakura Onsen)



### Enjoy Thoughtfully Designed Family Baths

Located in the Horita Onsen area, this facility offers 20 different types of family baths, each crafted from different materials such as Japanese cypress, ceramic, and granite. Additionally, there is a spacious public bath made out of solid rock and Japanese cypress that provides comforting warmth. It's open late so you can relax and unwind from your trip without worrying about the time.

**Area** Horita

📍 4-2 Horita, Beppu ☎ 0977-25-8431

🕒 11:00~0:00 (Last entry at 23:00),

Saturday, Sunday, National holiday : 10:00~1:00

(Last entry at 0:00), Public bath ~22:00, Irregular



## Hyotan Onsen



### A Popular Facility with Direct-Source Hot Spring Water

This hot spring has a history of over 100 years. You can bathe until late at night in the steam bath, Takiyu (waterfall bath) and sand bath, which can be enjoyed while wearing a yukata. The facility offers 14 types of popular private baths with different themes. The hot water is changed after each bath. This allows you to fully enjoy the freshest hot spring water.

**Area** Kannawa 📍 159-2 Kannawa, Beppu

☎ 0977-66-0527 🕒 9:00~1:00



## Hamawaki Onsen



### A Public Hot Spring Open Late

This public hot spring is located in the Hamawaki Onsen area. This area, like Kannawa, is known as the origin of Beppu's hot springs. Since its founding, this hot spring has been part of the locals' daily life. The bathtub is divided into two types, "Atsu-yu" (hotter water) and "Nuru-yu" (warmer water), making it popular among many people who can enjoy the hot spring until late at night.

**Area** Hamawaki

📍 1-8-20 Hamawaki, Beppu

☎ 0977-25-8118

🕒 6:30~1:00 Closed : Every 3rd Monday  
(or the following day if it's a national holiday)



### Onsen Steam Night View (Yukemuri Light Up)



### World Heritage-Level Hot Spring Steam Scenery at Night

Every Saturday, Sunday, and national holiday, the steam rising from the Kannawa hot spring is illuminated. The lights from the hotels and numerous ryokan in the Kannawa Onsen area, combined with the night view extending from central Beppu to Shin-Beppu, create a dreamlike scene of rising steam. This view is recognized as a "Night View Heritage of Japan."

**Area** Kannawa





# Universal Tourism

## A Journey That Takes You Wherever You Wish

Beppu City welcomes tourists and international students with a warm heart, fostering a spirit of mutual understanding and coexistence. The city is committed to creating an inclusive society, emphasizing diversity so that everyone can have a comfortable time. In the spirit of universal tourism, Beppu aims to be welcoming to a wide range of people, catering to the needs of the elderly, people with disabilities, families with small children, and many others.

Learn about and experience the lives of people with disabilities.



### 1 Taiyo Museum

#### Breaking New Ground in Parasports and Disability Understanding



This interactive museum serves as an information hub for promoting an inclusive society. You can participate in parasports and experience riding in a wheelchair. Hands-on experiences with tools that support the lives of people with disabilities and help to promote their independence are also available. Additionally, you can learn about the spirit of Dr. Yutaka Nakamura, known as the father of parasports.

**Area** Kamegawa Reservation is required.

📍 1393-2 Oaza Uchikamado, Beppu ☎ 0977-66-0277

🕒 Open: Monday-Friday (Weekday) 10:00~16:00 (Last entry at 15:30)  
Closed: Saturday, Sunday, New year, Summer break, Other

The cover art for the Morning, Noon, and Night sections and the illustrations in this feature were created by artists with disabilities from Beppu.

Solve problems that may happen during your trip.



### 2 Beppu/Oita Barrier Free Tour Center



#### Freedom to Travel for All

This organization provides assistance to ensure that everyone, regardless of disability, can enjoy their travels. This includes providing reliable information through advance consultations for seniors and people with disabilities by phone or email, conducting on-site accessibility surveys, and providing assistance to those bathing in hot springs.

📍 Beppu J 1F, 3-3-16, Ishigakihigashi, Beppu

☎ 090-6633-4882 🕒 9:00~17:00

Closed: Sunday



A guide book for free "ParaBeppu."



Interactive tourist information hub that extends beyond language barriers.



### WANDER COMPASS BEPPU

#### Have Unforgettable Adventures With Diverse Assistance



This tourist information center hands out brochures to tourists, provides route explanations to destinations, and shares unique local information in about eight languages. From sign language and communication via writing, to providing wheelchairs and strollers, they offer support for any travel-related concerns. This is a great spot to visit at the beginning of your journey.

**Area** Around Beppu Station

📍 Beppu BIS South Building, Ekimachi 1chome, 12-13, Ekimaecho, Beppu

☎ 0977-75-8716

🕒 8:45~18:00





# Beppu Hatto MAP

8 hot spring areas

## Between JR Beppu Station

- Hamawaki Approx. 2km
- Kankaiji Approx. 3.5km
- Horita Approx. 5km
- Kannawa Approx. 5.5km
- Kamegawa Approx. 6.5km
- Shibaseki Approx. 7.5km
- Myoban Approx. 9km
- Shidaka Lake Approx. 12km

Sightseeing Map  
PDF



Access  
to  
Beppu

## Stay

- Beppu Ryokan Hotel Association  
tel. 0977-22-0401  
Grand Mere Building 4th floor, 2-10-19  
Kitahama, Beppu



- Beppu City Official Accommodation Website
- Yunokuniyunotabi Beppu Onsen  
tel. 0977-77-4513 1-3 Suehiro-cho, Beppu



## Food

- Gurumeppu  
A free paper featuring specialty dishes  
and gourmet offers in Beppu.



## Sightseeing

- Beppu Tourism Association  
tel. 0977-24-2828  
Renga Hall 1st floor, Suehiro-cho, Beppu

- Beppu City Hall Tourism Division  
tel. 0977-21-1128  
1-15 Kaminoguchi-cho, Beppu

Tourist Information Center

- WANDER COMPASS BEPPU  
tel. 0977-75-8716  
Eki-machi 1-chome BIS South Building,  
12-13, Ekimae-cho, Beppu



## Transportation

### Bus

- Kamenoi Bus (Kitahama Bus Center)  
tel. 0977-23-5170 10-4, 2-chome, Kitahama, Beppu
- Oita Kotsu (Beppu branch office)  
tel. 0977-67-1331 58-1 Kitaozeki, Uchikamado, Beppu



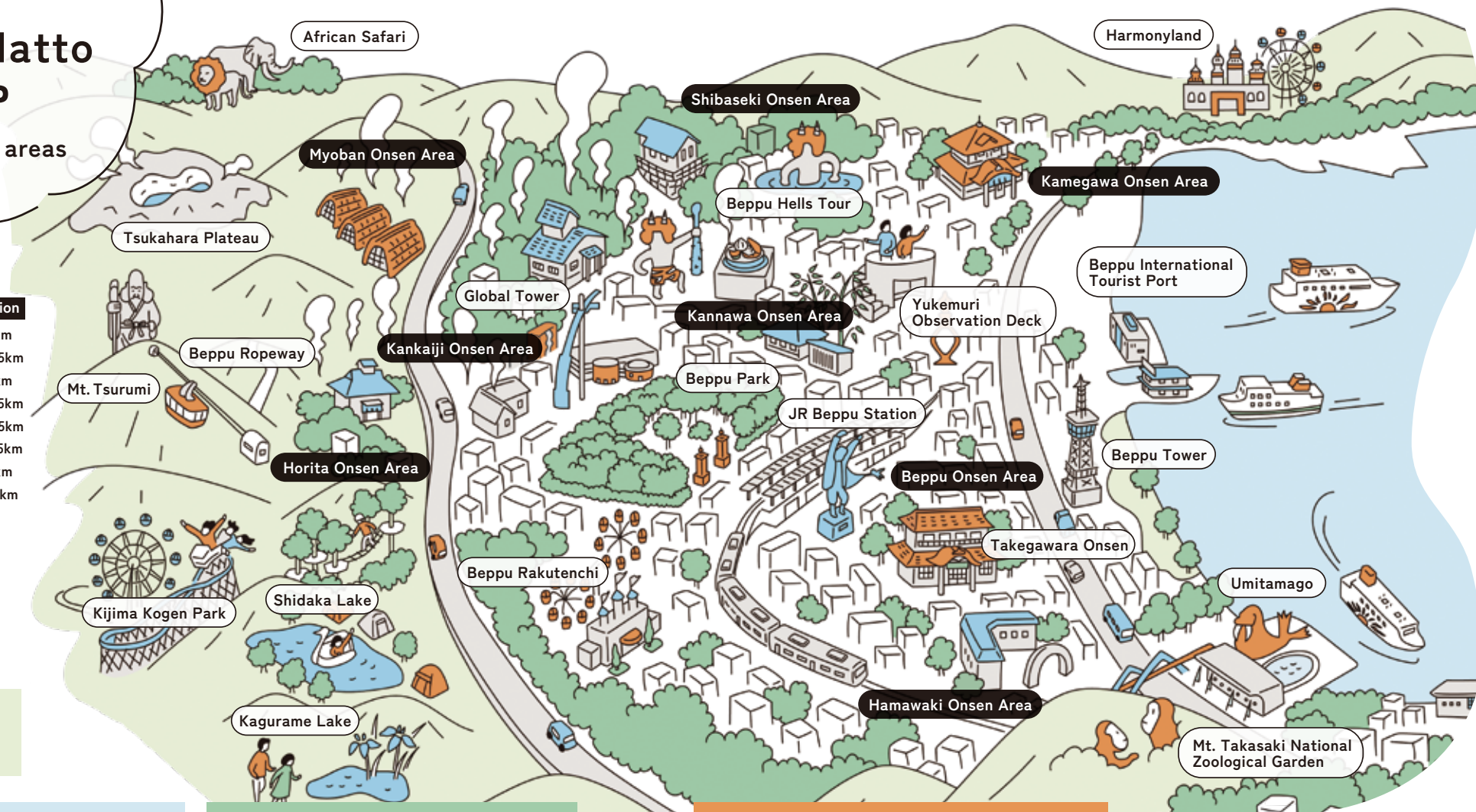
### Train

- JR Kyusyu  
Beppu Station  
12-13 Ekimae-cho,  
Beppu



### Taxi

- Beppu Taxi  
Association  
tel. 0977-22-4443



Check here  
for the latest information!

Instagram

@beppucity\_official



Beppu City Official Account

@beppu\_kankou



Facebook

Beppu Tourism

